

New York Energy Manager

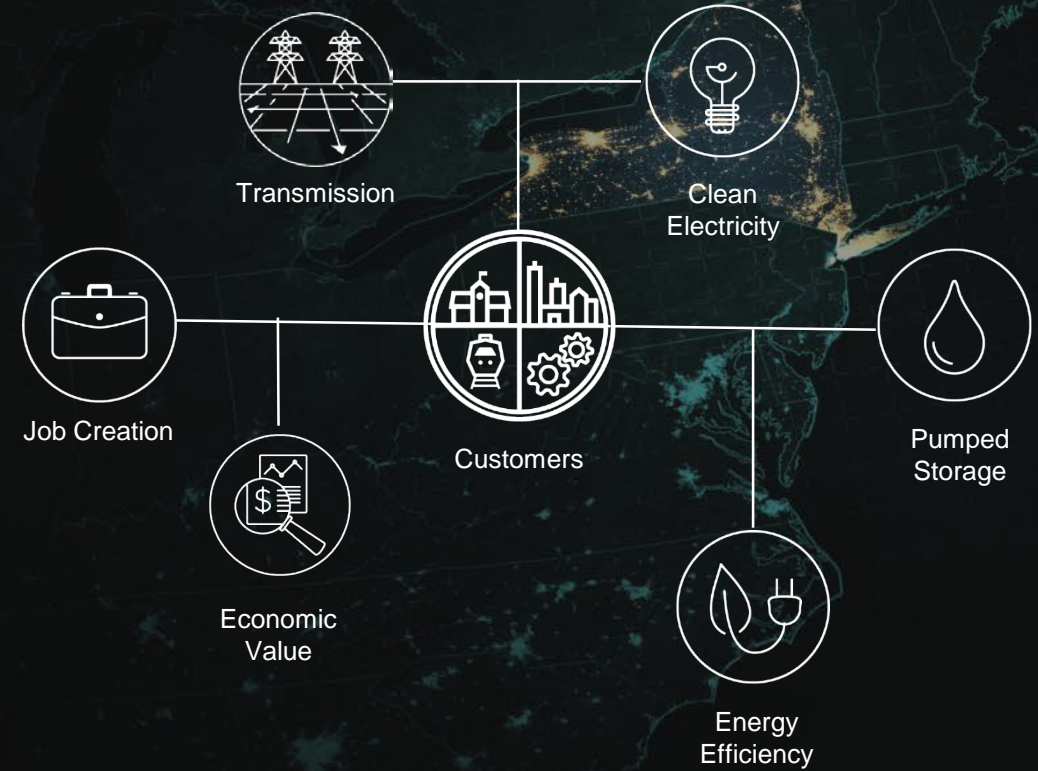
Rebecca Hughes
March 27, 2018



**NY Energy
Manager**

The New York Power Authority (NYPA)

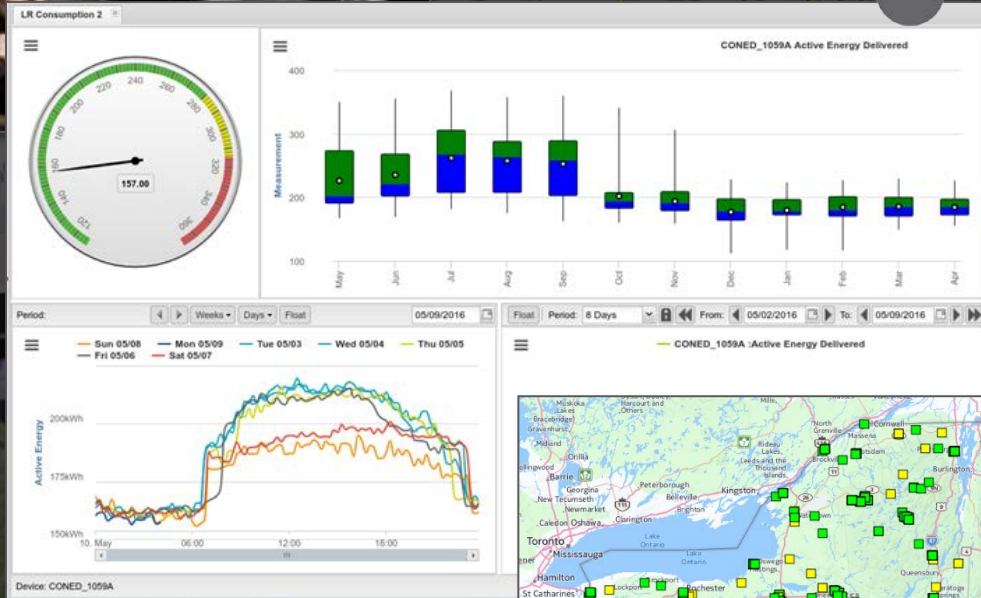
“Power the economic growth and competitiveness of New York State by providing customers with low-cost, clean, reliable power and the innovative energy infrastructure and services they value.”



Supply over 20% of NY State's electricity needs – 80% of which is carbon free



New York Energy Manager (NYEM) Today



- Started in 2014 to support EO88 – 20% savings by 2020
- Empowering our customers to use data and analytics to manage their facilities' energy use and reduce associated energy costs
- Over 11,000 buildings online, statewide
- Visibility into energy use at key assets in large buildings

NYEM Development: Two Paths

NYEM 1.0

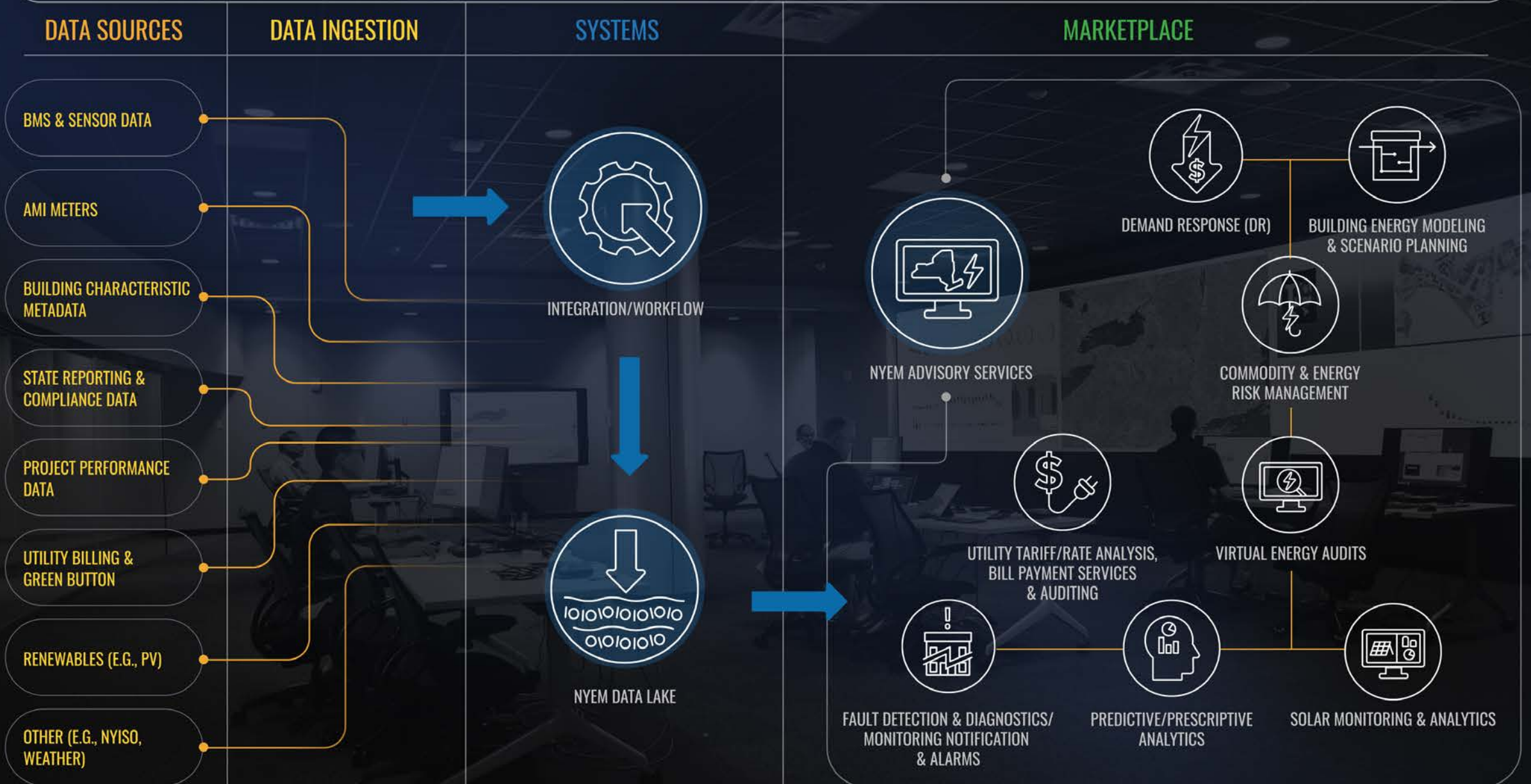
- Expand number of buildings on system
- Improve training and engagement

We
are
here

NYEM 2.0

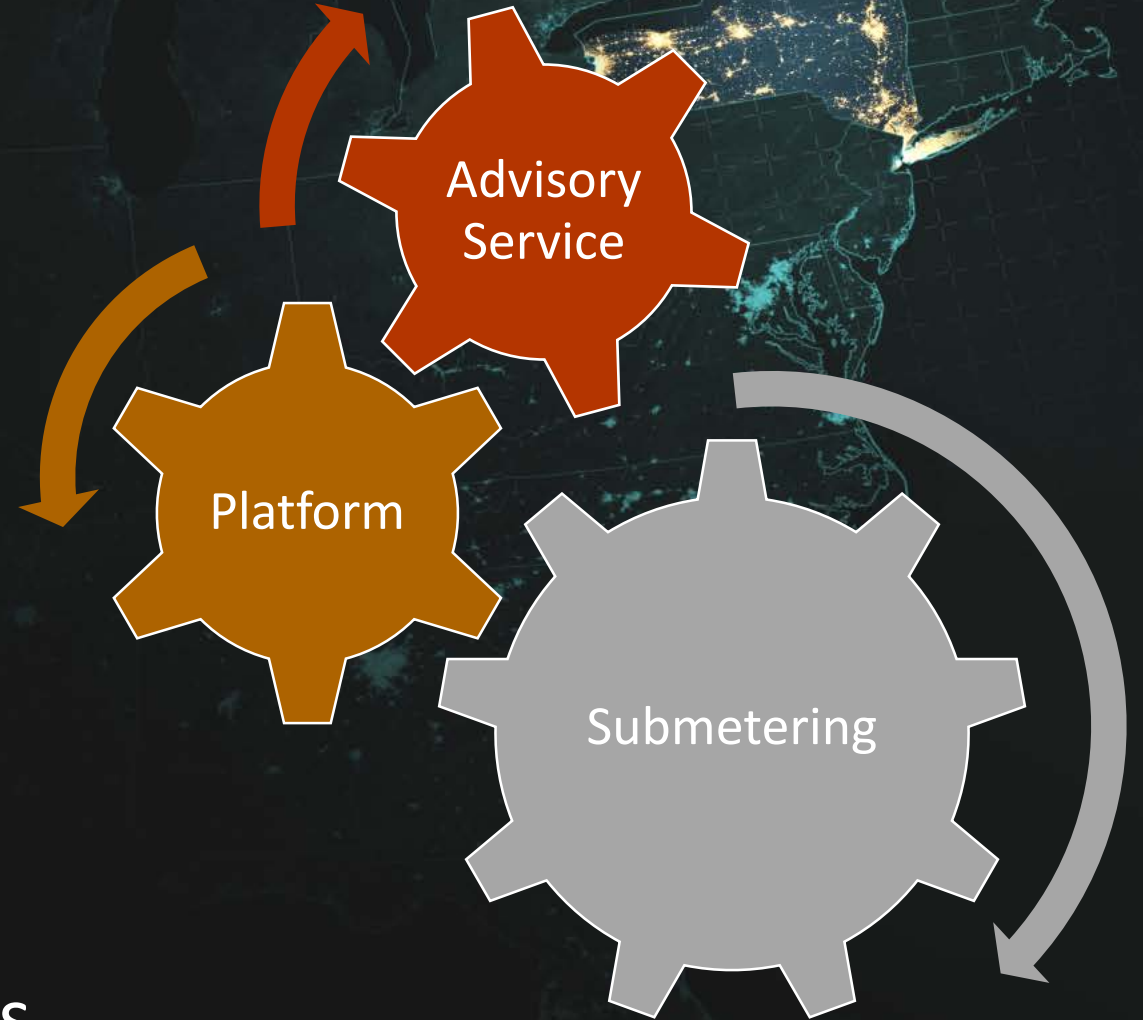
- Improve backbone
- Platform for expanded set of services & 3rd-party application development

NYEM CUSTOMER PORTAL (UX)



Core Offering

- 1. Submetering:**
the foundation to real time data collection
- 2. Platform:**
the key to presentment and visualization
- 3. Advisory Services:**
expert insight into energy performance and opportunities



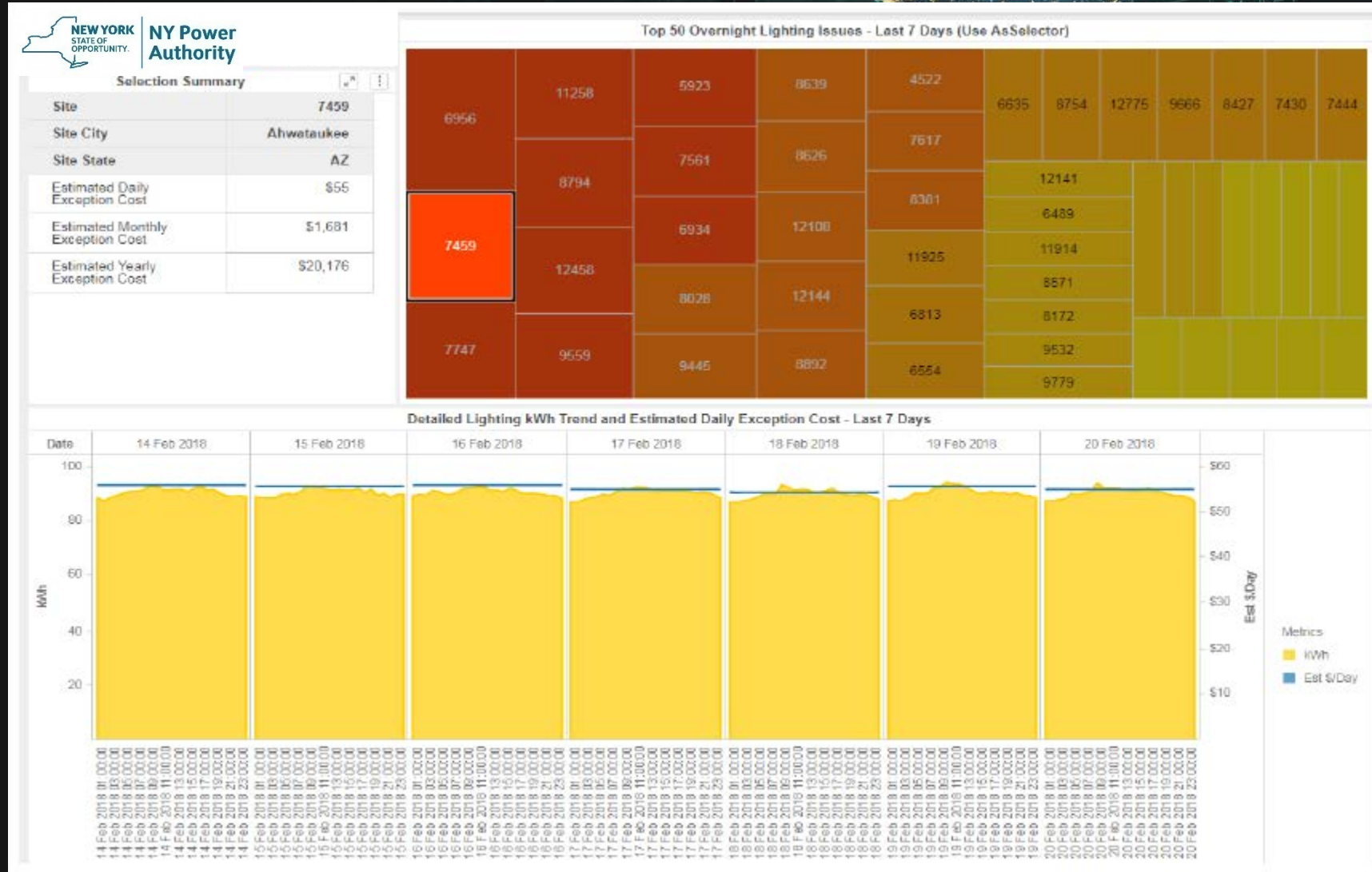
Additional Services

- **Measurement & Verification of EE projects**
- **Virtual energy audits**
- **Asset data collection**
- **Quarterly reporting**
- **Advanced analytics**
- **Continuous commissioning**
- **Programmable alarms and alerts**



Example: Monthly Report

Heat Map:
demonstrates overnight
lighting for a given
period (one week in this
example)



Power users can use
more detailed
information to analyze
trends and estimate
savings opportunities.

Deep Sub-metering Pilot Update

- **37 Completed Field Scoping Audits and Design**
 - 16 projects under negotiations for installation
 - SUNY Buffalo - Science Lab, Academic Center and Lecture Hall
- **Three Pilot projects installed to date:**
 - SUNY Stony Brook CRC Building: 83 meters
 - MTA Tuskegee Bus Depot: 197 meters
 - NYEM Network Operations Center: 25 meters



Rebecca Hughes
Marketing and Training Manager

Rebecca.hughes@nypa.gov

518.446.6217



**NY Energy
Manager**